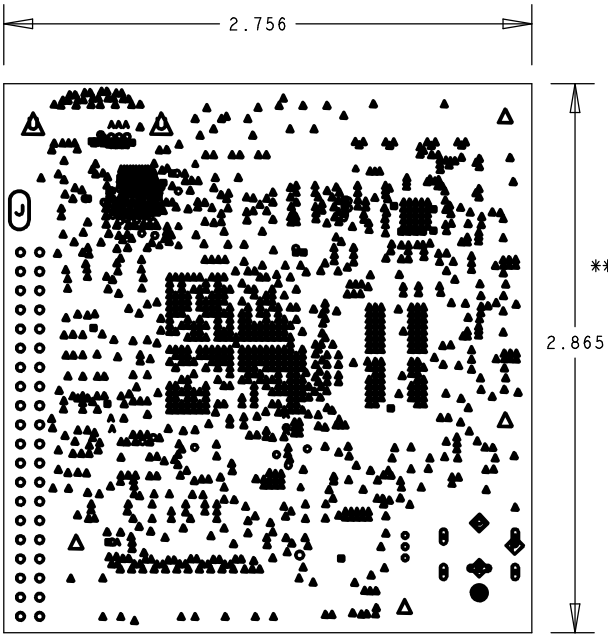


LAYER 1	0.0005	STACKUP	SOLDERMASK
	0.0020		1/2oz Sig (Std Plt) - 50 Ohms - 0.005 width 40 Ohms - 0.008 width 68 Ohms - 0.004 width
	0.0027		FR408H 100 Ohms Differential - 0.0041 width/0.00575 Space
LAYER 2	0.0006		1/2oz P/G
	0.0040		FR408H
LAYER 3	0.0006		1/2oz SIG - 50 Ohms - 0.005 width 40 Ohms - 0.0077 width 100 Ohms Differential - 0.00425 width/0.00575 Space
	0.0072		FR408H
LAYER 4	0.0006		1/2oz SIG - 50 Ohms - 0.005 width 40 Ohms - 0.0077 width 80 Ohms Differential - 0.0058 width/0.0042 Space
LAYER 5	0.0040		FR408H
	0.0006		1/2oz P/G
LAYER 6	0.0027		FR408H
	0.0006		1/2oz P/G
	0.0120		FR408H
LAYER 7	0.0006		1/2oz P/G
	0.0027		FR408H
LAYER 8	0.0006		1/2oz P/G
	0.0040		FR408H
LAYER 9	0.0006		1/2oz SIG - 50 Ohms - 0.005 width 40 Ohms - 0.0077 width 80 Ohms Differential - 0.0058 width/0.0042 Space 100 Ohms Differential - 0.00425 width/0.00575 Space
	0.0072		FR408H
	0.0072		FR408H
LAYER 10	0.0006		1/2oz SIG - 50 Ohms - 0.005 width 40 Ohms - 0.0077 width 80 Ohms Differential - 0.0058 width/0.0042 Space 100 Ohms Differential - 0.00425 width/0.00575 Space
LAYER 11	0.0040		FR408H
	0.0006		1/2oz P/G
	0.0027		FR408H
LAYER 12	0.0020		1/2oz Sig (Std Plt) - 50 Ohms - 0.005 width 40 Ohms - 0.008 width 68 Ohms - 0.004 width
	0.0005		SOLDERMASK

DRILL CHART: TOP to LY2GND				
ALL UNITS ARE IN MILS				
FIGURE	SIZE	TOLERANCE	PLATED	QTY
	4.0	+0.0/-4.0	PLATED	127
DRILL CHART: LY2GND to LY3				
ALL UNITS ARE IN MILS				
FIGURE	SIZE	TOLERANCE	PLATED	QTY
	4.0	+0.0/-4.0	PLATED	61
DRILL CHART: LY2GND to LY11GND				
ALL UNITS ARE IN MILS				
FIGURE	SIZE	TOLERANCE	PLATED	QTY
	8.0	+0.0/-8.0	PLATED	53
DRILL CHART: LY10 to LY11GND				
ALL UNITS ARE IN MILS				
FIGURE	SIZE	TOLERANCE	PLATED	QTY
	4.0	+0.0/-4.0	PLATED	11
DRILL CHART: LY11GND to BOTTOM				
ALL UNITS ARE IN MILS				
FIGURE	SIZE	TOLERANCE	PLATED	QTY
	4.0	+0.0/-4.0	PLATED	78
DRILL CHART: TOP to BOTTOM				
ALL UNITS ARE IN MILS				
FIGURE	SIZE	TOLERANCE	PLATED	QTY
	8.0	+0.0/-8.0	PLATED	1226
	24.0	+3.0/-3.0	PLATED	6
	28.0	+3.0/-3.0	PLATED	3
	40.0	+3.0/-3.0	PLATED	41
	55.0	+3.0/-3.0	PLATED	1
	63.0	+0.0/-0.0	PLATED	3
	94.0	+0.0/-0.0	PLATED	2
	106.0	+0.0/-0.0	PLATED	4
	63.39	+3.0/-3.0	NON-PLATED	1
	78.74x31.5	+3.0/-3.0	PLATED	4
	118.11x31.5	+3.0/-3.0	PLATED	1
	200.0x100.0	+4.0/-4.0	NON-PLATED	1



FAB NOTES:

1. ALL DIMENSIONS ARE IN INCHES UNLESS OTHERWISE NOTED. ALL BOARD OUTLINE DIMENSION TOLERANCES ARE +/- .010".
2. THE PWB SHALL BE FABRICATED TO IPC-6012 CLASS 2 AND WORKMANSHIP SHALL CONFORM TO IPC-A-600, CLASS 2. CURRENT REVISIONS.
3. BOARD MATERIAL SHALL BE ISOLA FR408HR OR EQUIVALENT, RoHS AND REACH COMPLIANT AND LEAD FREE ASSEMBLY CAPABLE. BOARD MATERIAL SHALL MEET OR EXCEED IPC-4101B. RoHS AND REACH CERTIFICATE OF CONFORMANCE SHALL BE DELIVERED WITH EACH LOT.
4. ALL BOARDS MUST MEET OR EXCEED UL94V-0 REQUIREMENTS. PCB MUST BEAR THE UL94V-0 UL REGISTERED MATERIAL ID NUMBER.
5. MINIMUM COPPER WALL THICKNESS OF PLATED-THRU HOLES TO BE .001 INCH WITH A MINIMUM ANNULAR RING OF .002 INCH.
6. OVERALL BOARD THICKNESS TO BE .062 +/- 10% AND APPLIES AFTER ALL LAMINATION AND PLATING PROCESSES, MEASURED FROM COPPER TO COPPER.
7. MAX. WARP & TWIST TO BE .0075 INCHES PER INCH.

PROCESS NOTES:

1. EXCEPT AS NOTED BELOW, PLATE ALL EXPOSED AREAS WITH ELECTROLESS IMMERSION GOLD, NICKEL 100 MIN MICROINCHES THK GOLD 2-6 MICROINCHES THK.
2. FABRICATOR TO REMOVE UNUSED PADS ON INTERNAL LAYERS.
3. MINIMUM TRACE/SPACE UNDER UDPP IS .0023/.0023
4. APPLY LDI SOLDERMASK. COLOR: RED. SOLDERMASK SHALL CONFORM TO IPC-SM-840, CLASS H. CURRENT REV. SOLDERMASK SHALL BE COMPATIBLE WITH SAC305 OR EQUIVALENT SOLDER ALLOY AND SOLDER FLOAT BATH TEMPERATURE OF 288°C.
5. SOLDERMASK ARTWORK HAS ZERO (0) OVERSIZED PADS. FABRICATION VENDOR IS ALLOWED TO ADJUST THE COMPONENT SOLDERMASK PADS TO MEET THEIR TOOLING REQUIREMENTS WHILE MAINTAINING WEBBING BETWEEN ADJACENT PADS.
6. SOLDERABILITY SHALL BE IN ACCORDANCE WITH IPC/EIA J-STD-003A, WITH SOLDER BATH TEMPERATURE OF 250°C +/-5 C FOR DIP OR ROTARY TEST.
7. APPLY LPI SILKSCREEN OR EQUIVALENT PER THE ARTWORK. COLOR: WHITE.
8. BOARD MUST BE ELECTRICALLY TESTED USING SUPPLIED IPC-D-356 NETLIST.

CUSTOMER NAME					TEXAS INSTRUMENTS					DRAWN							
BOARD NAME				DLPDLCR230NPEVM				DESCRIPTION				DRILL DRAWING					
BOARD NO.		DLP038		REV	A	DATE		29-MAY-2020		PRJ#		TIDL-118506-03		SH	19	OF	19